

From the Holme to  
Pleasant Garden

WHITAKER

# Correspondence Genealogy and How Little We Knew

The Blue Book



# Brief History in England

- ◆ The Holme
- ◆ Clitheroe Castle and Feudalism
- ◆ English Social Classes
- ◆ Descent of Arms



*Arms of Wiltshire*



J. GODFREY, SCULPT

Volume.

# Clitheroe



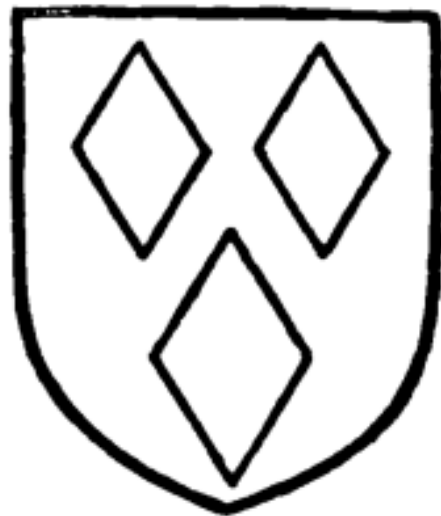
# First Twist



# Laws Concerning Heraldry

◆ Scropes v. Grosvenor (1389)

◆ Distinguishing and Inheriting Arms



Whitacre. Sable three lozenges argent.



Whitaker of Holmes. Sable three mascles argent.

Whitacre → Whitaker

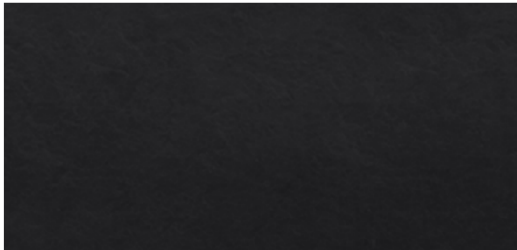




How did we get from here to here?

# The Whitakers of Warwickshire

- ◇ Originally called Barcheston – Whitacre used as the name of a junior branch
- ◇ First record – Simon de Whitacre sat on seven juries during the eyre of 1232
- ◇ Jordan de Whitacre and Simon de Whitacre listed as knights in the Curia Regis Rolls
- ◇ Legal Troubles – Lordship, Knighthood, and Locality



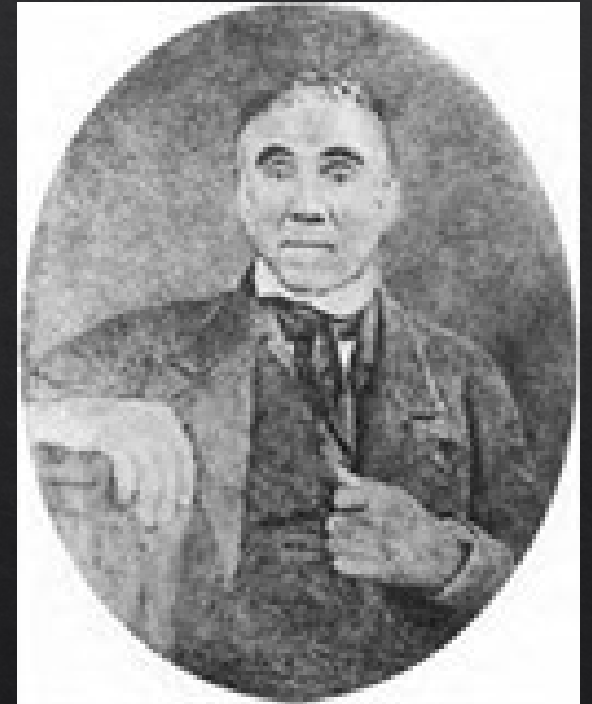
Getting From  
Here to Here



# Rowan County, North Carolina and the three Mark Whitakers

# The Known Entity – John Whitaker

- ◇ From Rowan County
- ◇ Father was one of the Mark Whitakers
- ◇ Brother named Mark
- ◇ Served in the Revolution
- ◇ Married Martha Wilcockson and later Nancy Guess
- ◇ Settled on the east side of Mulberry Creek



John J. Whitaker  
(son)

# John “Peg Leg” Whitaker

- ◆ Rowan County, NC
- ◆ The Revolution – Fighting in the Salisbury District
- ◆ Kentucky
- ◆ Lincoln County and Mulberry, TN





# The First Line

Joshua Whitaker and Jane Banister Parker Whitaker

# Second Twist

*Elvis Presley*  
*Rock and Roll*

LET'S TWIST  
AGAIN







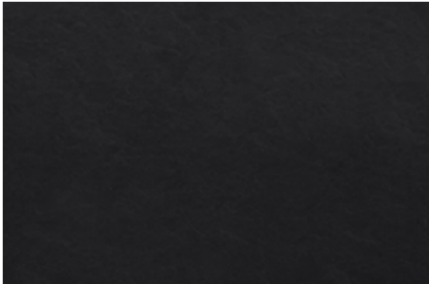
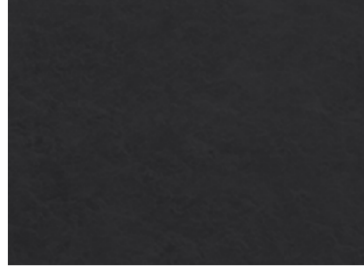
# The Second (Really First) Line

Jamestown, 1620

## Pennsylvania versus Jamestown



- ◇ Descendants of Jabez
- ◇ The two “John Whitakers”
- ◇ The Conflicting Primary Source



# Dad's Discovery









